

Model 9510 32-Port RJ45/SCSI-5 Patch Panel System

- **A 32-Port RJ45/SCSI-5 Patch Panel with VHDCI Cables and Strain Relief Kit.**
- **Provides RJ45 Access to Individual Circuits of Site Controllers.**

INTRODUCTION:

The Model 9510 32-Port RJ45/SCSI-5 Patch Panel System is a **32-port patch panel with 32 RJ45 ports wired to four 68-pin SCSI-5** connectors kitted with four SCSI-5 cables, a strain relief bar, and fastener hardware. The panel is designed to facilitate management of cable connections between data networks, data processing equipment, site controllers.

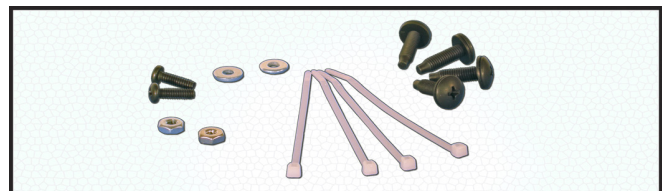
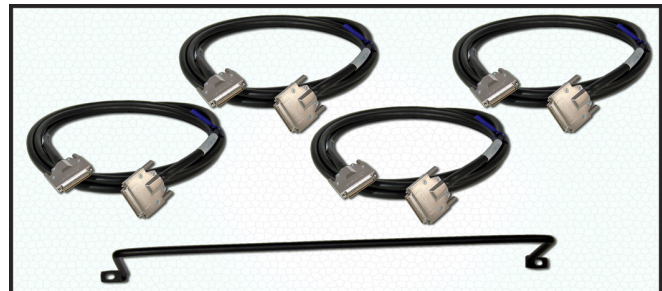
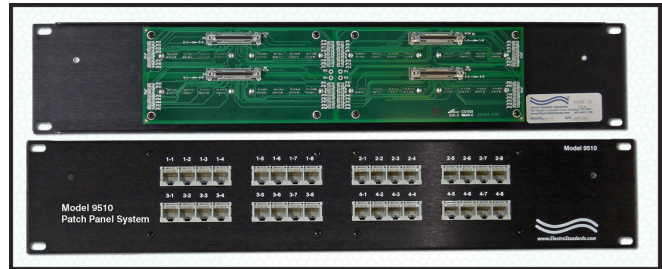
On front side of the panel are 32 RJ45 jacks designed to receive patch cables brought in from data networks.

On back side of the panel are four 68-pin SCSI-5 ports designed to accept cables from data processing equipment.

The front panel RJ45 jacks provide a convenient means of accessing individual circuits for **monitoring, interconnectivity, or testing**. The panel is rugged, 19-inch rack-mounted, capable of withstanding extreme conditions. All ports are clearly labeled with circuit identification. The four rear panel SCSI-5 ports are labeled to match the four SCSI-5 cables included with the system.

FEATURES:

- 32 RJ45 jacks on front panel accept patchcords from RS485/RS422 data terminals/networks.
- Internal circuit board provides reliable connection to four 68-pin SCSI-5 ports on rear panel.
- Four 10-ft (3 meter) SCSI-5 M/M cables are included to provide subsequent connection to data processing equipment. The cables are labeled at both ends.
- A strain relief bar, mounting hardware, and cable fastener ty-wraps are included to facilitate secure wire management.
- The panel is 2U high and mounts in a standard rack. Dimensions: 3.5" H x 19" W x 0.5" D. (8.9 x 48.3 x 3.8 cm).
- Shipping weight of the 9510 System (panel, 4 cables, mounting bar, and hardware): 2.5 lb, (1.1 kg)



Model 9510 32-Port RJ45/SCSI-5 Patch Panel System Application:

